



# ES260

Portable Color Doppler  
Ultrasound System



Shenzhen Bondway Electronics Co.Ltd.

# ES260

## Portable Color Doppler Ultrasound System

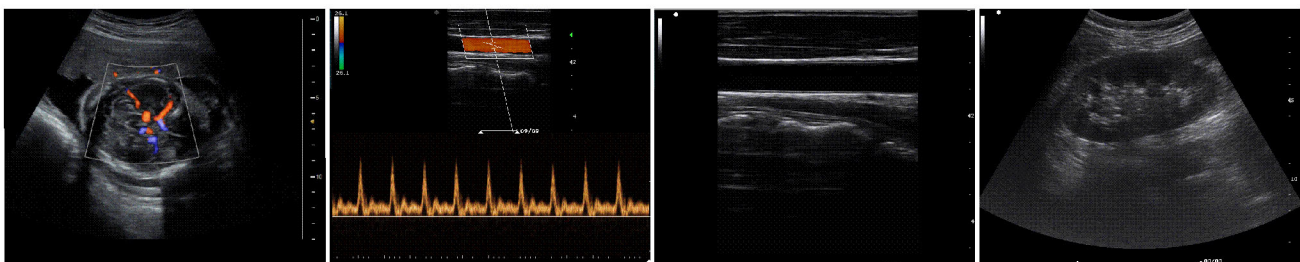
**BONDWAY**  
since 2006

It is a new-generation portable color Doppler ultrasound system from Bondway, which is based on advanced PC platform and integrated with new clinical ultrasonography solutions. Its superior image quality, comprehensive functions and unique U-shape design offer a new choice for clinical ultrasound users.

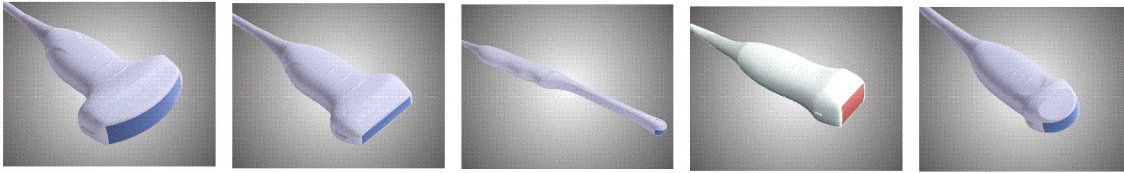
### Advanced Imaging Technologies

- Phase-inversion Harmonic Imaging + Frequency Compound Imaging  
Ensure excellent penetration and more delicated 2D images
- Spatial Compound Imaging  
Compound the images taken from multiple scanning angles to reduce artifact noise and improve image quality
- Speckle Reduction Technology  
Reduce speckle noise to improve image quality
- Multiple Imaging Modes  
B/C/PW/PDI/M mode, Duplex & Triplex Imaging, Wide-angle Steer Scanning Imaging, Panoramic Imaging, Trapezoid Imaging, Anatomic M Mode, Color M Mode, Tissue Doppler Imaging, 3D/4D Imaging
- Doppler Enhancement Technology  
Effectively suppress color Doppler flashing noise to improve the resolution and sensitivity of color flow
- Multi-Beam Formation Technology  
Increase time resolution and frame rate
- Auto Measurement of Intima-media Thickness (IMT)  
Easy operation improves work efficiency
- One-key Image Optimization  
Automatically adjust imaging parameters to optimize images with one key

### Clinical Images



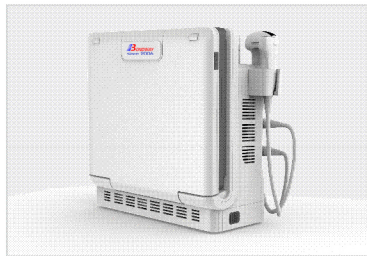
● Wide-range Options for Probes



● User-friendly Design



Monitor Adjustable up to 90°

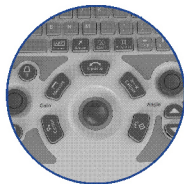


Compact Design



Built-in Lithium Battery

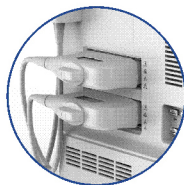
# ES260



Backlight Operation Panel



15"LCD



Dual Transducer Connectors



Various I/O Ports

